



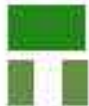
Initiation and Funding



Prime



Users and Coordination



Technical Partners



Financed by ESA

Focus: Space – Water – Africa

Remote Sensing for Integrated
Water Resources Management in Africa

Status in progress: completion mid 2007

BUDGET 1.3 Million Euro

SASS: Systeme d'Aquiferes du Sahara Septentrional

- underlies parts of **Algeria, Tunisia** and **Libya**.
- covers well over 1,000,000 km²

Iullemeden:

- located in **Mali, Niger** and **Nigeria**
- covers an area of 525,000 km²

.....
a **TRADITION of INNOVATION**



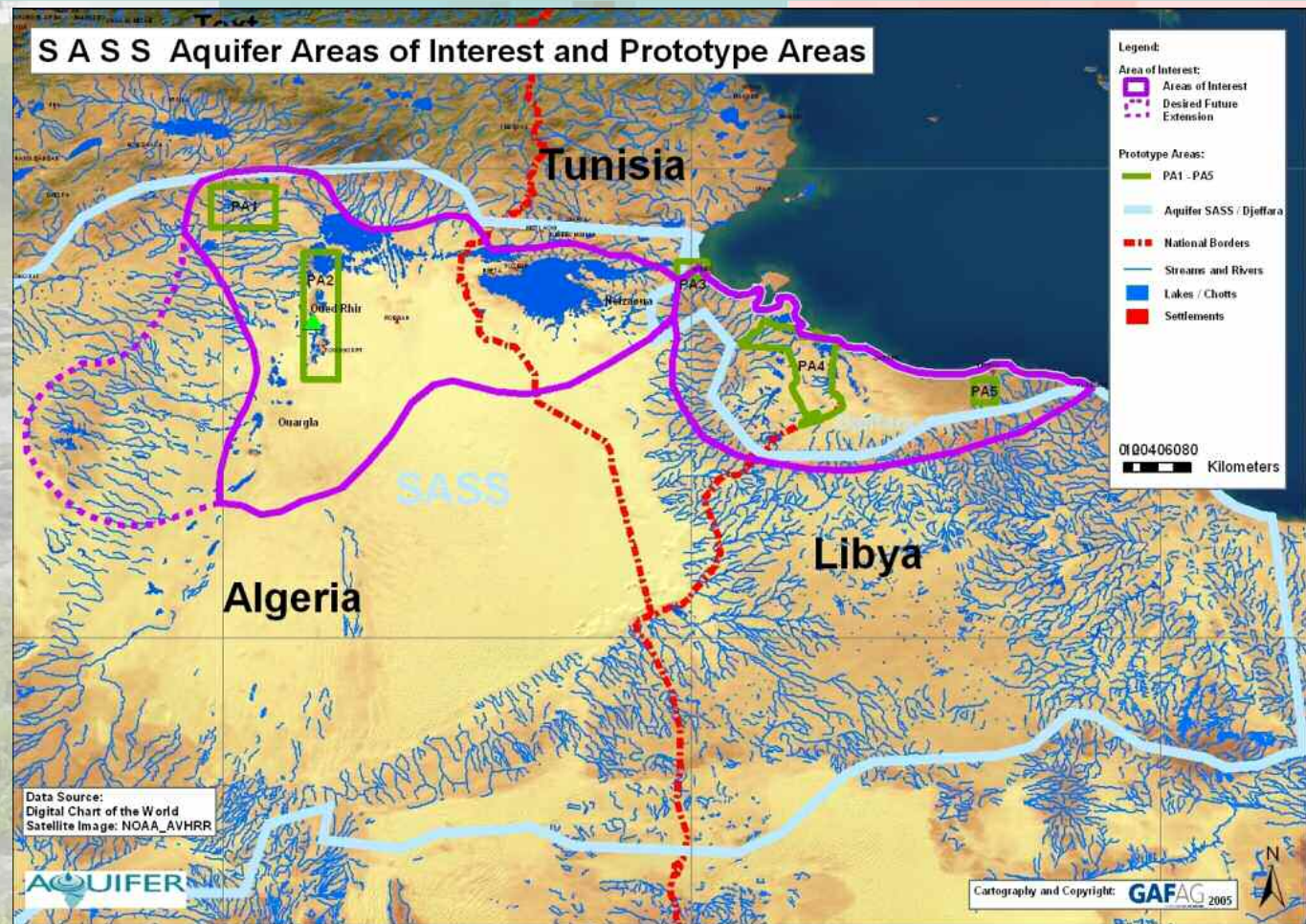
Study areas



.....
a TRADITION of INNOVATION

ISO 9001 certified

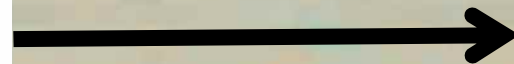
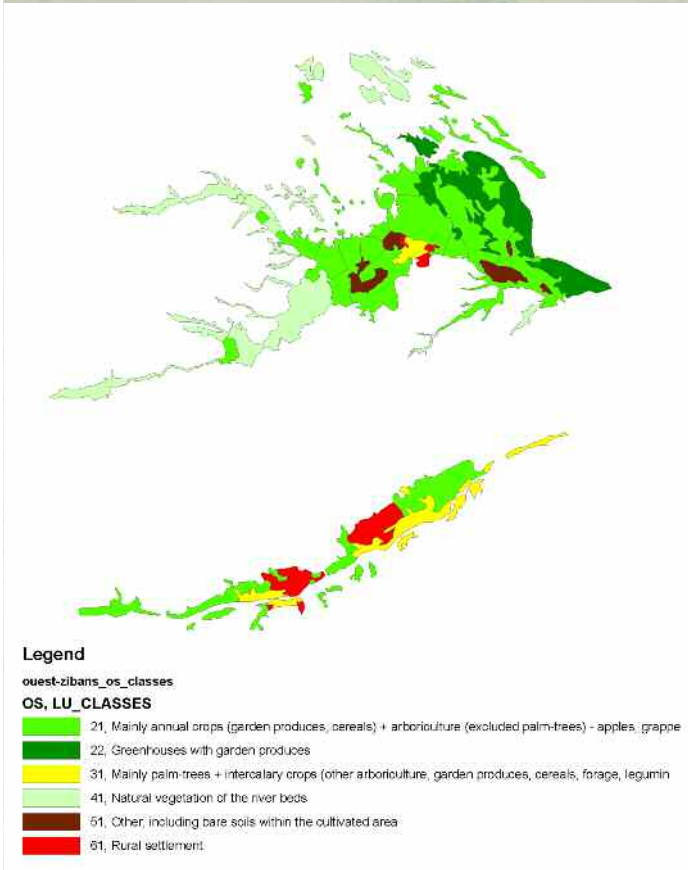
Prototype areas



Irrigation management

Land use from RS

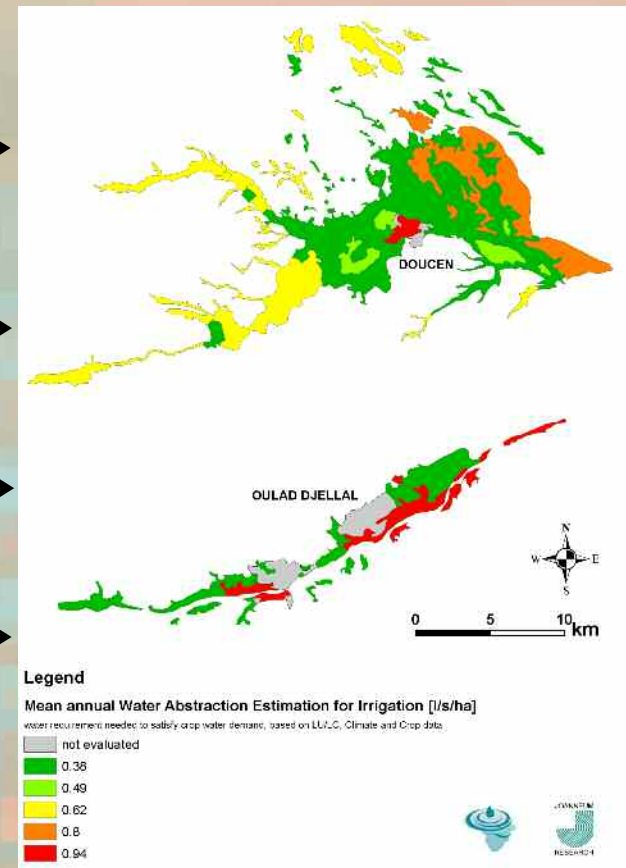
Water Abstraction Estimate for Irrigation



+Climate data →

+Crop data →

+Soil data →



Irrigation management

Water Abstraction Estimate for Irrigation is an estimation of the **optimal amount** of water to be extracted and applied to the irrigation scheme to satisfy the crop water demand during the growing season (2005).

Future input for the consultation mechanism of a transboundary aquifer.

